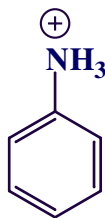


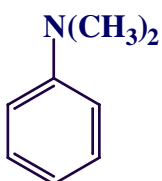
Exercices (Aromatiques)

1) Les noyaux benzéniques des composés suivants sont-ils activés ou désactivés ?

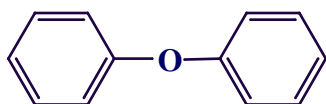
a)



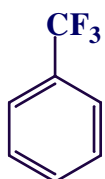
b)



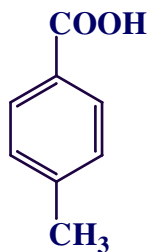
c)



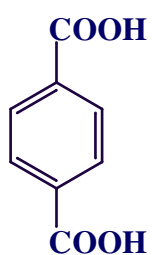
d)



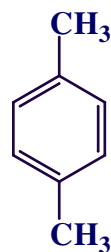
2) Classez les composés par ordre croissant de leur réactivité vis-à-vis de la substitution électrophile.



1



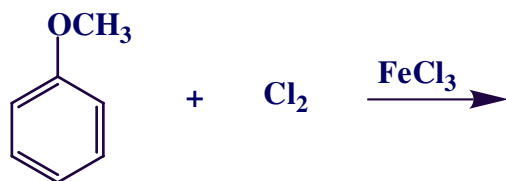
2



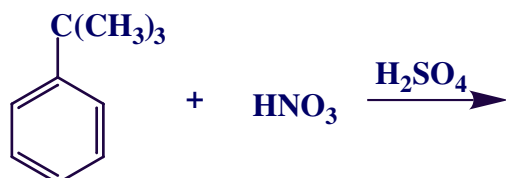
3

3) Quel sera (seront) le (les produit (s) majeur (s) des réactions suivantes ?

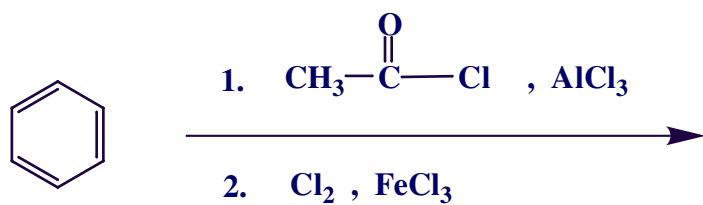
a)



b)

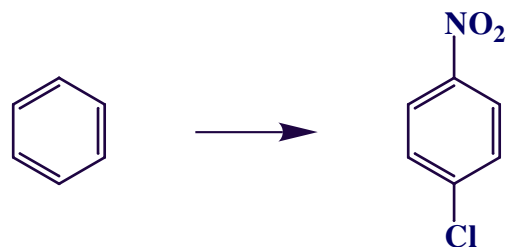


c)

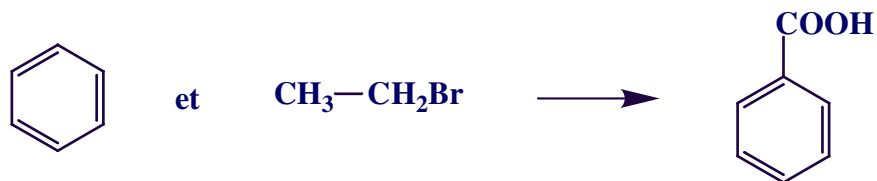


4) Montrez comment il est possible de faire les transformations suivantes :

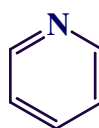
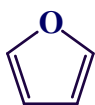
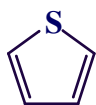
a)



b)



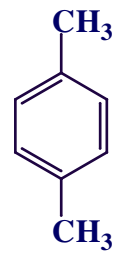
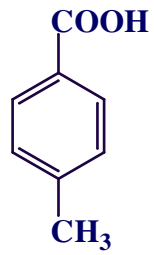
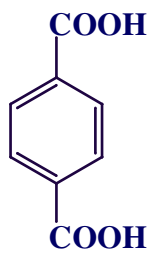
5) Identifiez parmi les molécules suivantes les composés aromatiques.



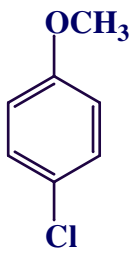
Solutionnaire

1. a) Désactivant
b) Activant
c) Activant
d) Désactivant

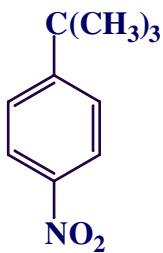
2.



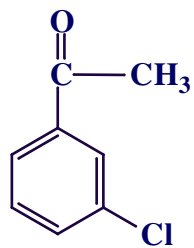
3. a)



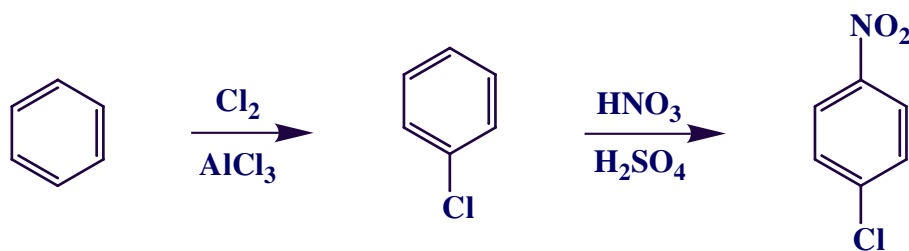
b)



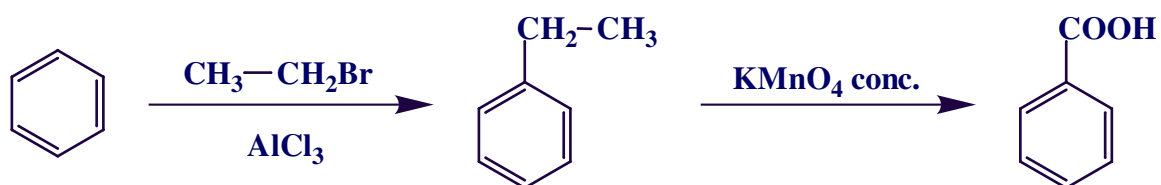
c)



4. a)



b)



5.

